

# Vision<sup>VUE</sup>

## LITE Series Smart Boards



Resolution



Multi-Touch



Anti-Break



Anti-Glare



Camera



Meeting arrangement

# VisionVue Smart Board

## Revolutionize Enterprise Collaboration

The VisionVue Smart Board is the ultimate tool for transforming workplace interactions. Designed with advanced technology, this interactive smart board is perfect for SMEs and corporate environments. With a built-in camera, microphone and speaker it delivers:

A multisensory collaborative experience.

Seamless hybrid meeting capabilities for both employees and presenters.

An innovative way to modernize traditional meetings for the digital age.



### Collaborate Effortlessly

Experience seamless teamwork with the VisionVue Smart Board. Its intuitive features make collaboration easier than ever:



#### Wireless Sharing

Share content from your device to the board with just one click.



#### Interactive Whiteboard

Simplify presentations and meetings with an intuitive, responsive touchscreen.



#### Real-Time Engagement

Ideal for business proposals, brainstorming, and team discussions.

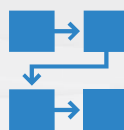
### Empower Your Workspace

The VisionVue Smart Board goes beyond a typical whiteboard, enhancing productivity and creativity:



#### Remote Device Control

Manage the board directly from your personal device.



#### Innovative Tools

Perfect for flowchart sharing, brainstorming sessions, and wireframing.



#### Dynamic Design

Create an engaging and collaborative atmosphere that elevates your team's potential.





## Smart Present

Facilitate collaboration effortlessly with VisionVue Smart Board for virtual and in-person meetings. Empower enterprise teams to stay connected with features tailored for effective collaboration and seamless management of meeting activities.

### Screen Mirroring

Connect and share up to 4 devices simultaneously.

### Moderator Control

Reverse Broadcast to over 100 devices for large-scale presentations.

### Universal Compatibility

Works seamlessly with Android, iOS, Windows, Mac, and Chrome.



## Collab

Collaborate without limits using Collab, a virtual whiteboard designed for productivity and innovation. Whether you're working across devices, browsers, or time zones, Collab enables teams to brainstorm, create, and innovate with ease.

### AI-Powered Image Generator

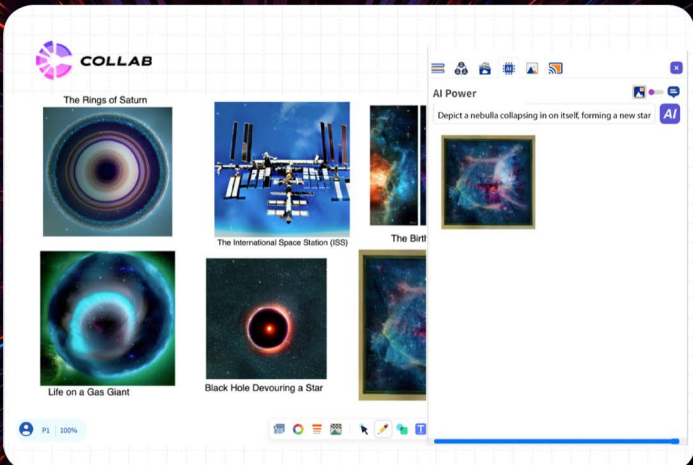
Bring ideas to life effortlessly.

### Rich Template Library

Kickstart brainstorming sessions and planning with professional templates.

### Cross-Device Compatibility

Collaborate from any device or browser, anytime, anywhere.



## Proctor

A powerful device management tool designed to simplify and enhance the way institutions control and monitor digital environments. With centralized control, automation, and real-time oversight, it helps the IT administrators ensure secure, efficient, and seamless operations.

### Unified Operations, wherever and whenever

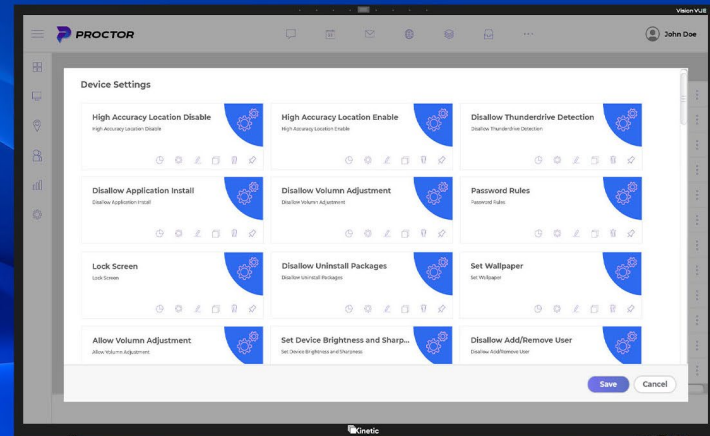
Gain better control and focus with pre-defined operational modes and device settings.

### Remote Device Monitoring

Monitor and control the devices in real-time from a central dashboard - ensuring smooth, uninterrupted sessions.

### Software Update OTA

Schedule and deploy updates across all devices without manual effort, keeping systems secure and up to date.



# SPECIFICATIONS

Model	VISIONVUE 65" LITE		VISIONVUE 75" LITE		VISIONVUE 86" LITE	
DISPLAY						
Diagonal Screen Size	65"		75"		86"	
Light Source	DLED					
Brightness	325 cd/sq.m					
Contrast	1200:1					
Resolution	3840 x 2160 (4K)					
Response Time	8ms					
Viewing Angle	178° (H/V)					
Display Colour	1.07B (10 bits)					
Color Gamut	72%					
Screen Protection	4mm Toughened Glass Surface Protection					
RGB Signal	VGA/ SVGA/XVGA/SXGA/WUXGA					
CONNECTIVITY						
HDMI	2					
Touch USB	2					
USB Type C	1					
USB 2.0	2					
USB 3.0	2					
Ethernet LAN (RJ45)	1					
LINE OUT	1					
RS232	1					
TF CARD	1					
COAX	1					
INTERACTIVE PARAMETER						
Touch Surface	Anti-Break					
Touch Sensor	InfraRed					
Touch Point	20 points					
Writing Tool	Pen or Finger					
Touch Resolution	32767 × 32767					
Response Time	Less than 5ms					
Positioning Accuracy	1mm					
SOUND						
Built-in Speakers	2 x 16 watts					
Built-in Microphones	8x built-in beamforming microphones coverage up to 8 meters, supported wide band audio & echo cancellation					
CAMERA						
Built-in Camera	13 Megapixels , 89° angle					
Camera Resolution	4K (3840x2160p)					
ANDROID Processing						
Processor	Octa-Core A55 (Each Core 1.2GHz)					
Graphics Processor	Quad-core Mali G52					
RAM	8GB					
Storage	128GB					
WIFI	WIFI 2.4, 5.0					
Bluetooth	5.0					
Android Version	14.0					
Power Supply						
Power Supply	AC 100-240V~ 50/60Hz					
Power Consumption	250 Watt		360 Watt		460 Watt	
Mechanical						
Box Dimensions (W x H x D) mm	1630.0 x 1050.0 x 220		1860.0 x 1160.0 x 220.0		2120.0 x 1325.0 x 220.0	
Box Weight (kg)	44		65		83	
Unit Dimensions (W x H x D) mm	1484.3 x 919.9 x 116		1706.8 x 1044.1 x 116.0		1953.0 x 1184.4 x 116.0	
Unit Weight (kg)	37		51		67	
Vesa Mount (W x H) mm	500 x 400		600 x 400		800 x 400	
Included in the Box						
Accessories Pack	Power Cable, Remote Control, 2x Stylus Pen, Quick Guide Manual and Wall Mount Bracket Screw					

**Data Hub Sdn Bhd**

(202101023967)(1424267-A)

NO 1, JALAN TIANG U8/94,  
SEKSYEN U8, BUKIT JELUTONG,  
40150 SHAH ALAM SELANGOR.

 (603) 7846 2338  (603) 7846 6338



 <https://www.kinetictechs.com/>

 [contactus@kinetictechs.com](mailto:contactus@kinetictechs.com)

Authorised Partner: